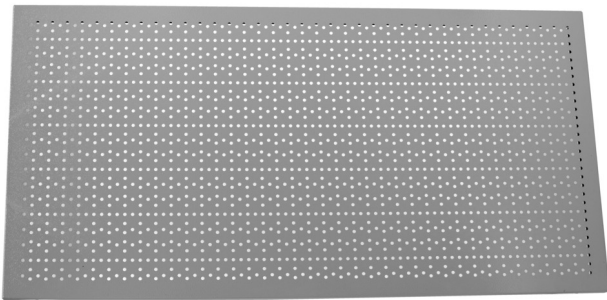


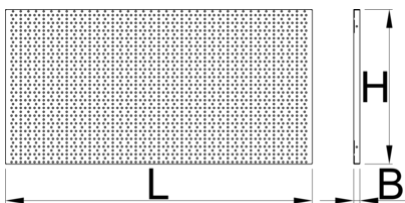
Display panel

996A



Product features

- The backs are made of high-quality Premium Plus sheet materials, ensuring long-lasting use.
- They include Euroloch perforations to which users can easily attach hooks and other holders.
- The holders are fixed with M6 screws.
- They are designed for hanging hand tools on hooks of different lengths.
- designed for wall mounting



629426

L

1000

B

20

H

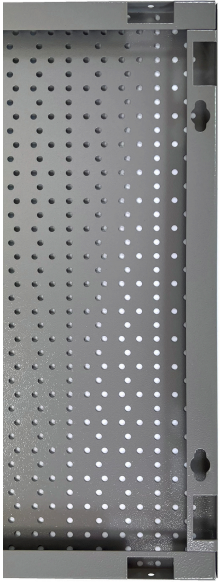
500



3760

* Images of products are symbolic. All dimensions are in mm, and weight in grams. All listed dimensions may vary in tolerance.

Usage (pictures)



Accessories



Hook, 10 pcs set



Double hook, 10 pcs set



Holder for cordless screwdriver



Holder for hammers



Holder with pin, 10 pcs set



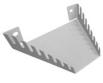
Holder for pliers, 10 pcs set



Holder for screwdrivers

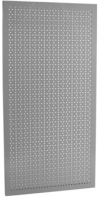


Holder for tablet



Holder for wrenches

Related products



Display panel