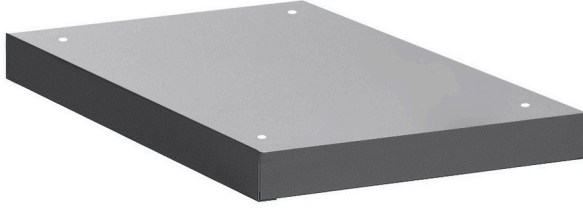


Dar takım göğsü altı taban

990NDU-BLACK



Profiles



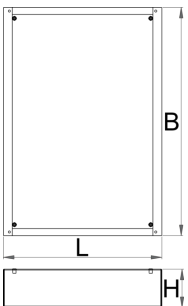
Product features

- malzeme: sac metal

Features:

- Height Elevation: Raises workbench height by 60mm (total base height 78mm) for improved ergonomics.
- Efficient Storage: Allows for easy storage of tool carriages beneath your workbench.
- Durable Construction: High-quality steel build ensures long-lasting durability.

Upgrade your workshop with the Unior 990NDU BLACK Underbase.





627689



60

L

442

B

640

H

78



6400

* Ürünlerin resimleri semboliktir. Bütün boyutlar mm ve ağırlık gram cinsindedir.