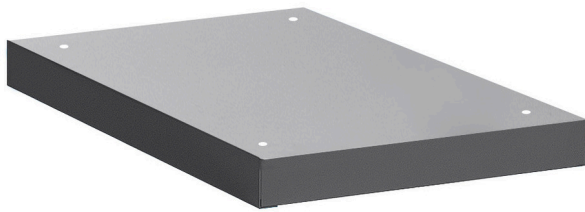


# Parte ampia sotto la base

990NDU-BLACK



## Profili

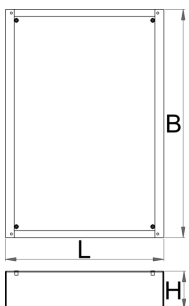


## Attributi del prodotto

- materiale: lamiera di metallo premium

## Caratteristiche:

- Height Elevation: Raises workbench height by 60mm (total base height 78mm) for improved ergonomics.
  - Efficient Storage: Allows for easy storage of tool carriages beneath your workbench.
  - Durable Construction: High-quality steel build ensures long-lasting durability.
- Upgrade your workshop with the Unior 990NDU BLACK Underbase.





627689



60

L

442

B

640

H

78



6400

\* Le immagini dei prodotti sono puramente simboliche. Tutte le dimensioni sono in mm, peso in grammi.