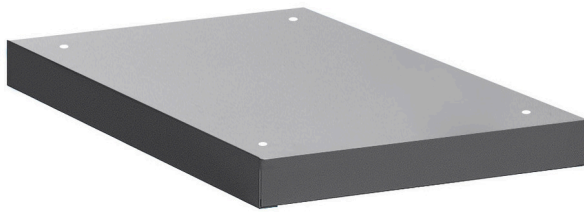


Narrow tool chest underbase

990NDU-BLACK



Profils

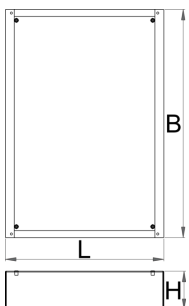


Description produit

- matière : tôle d'acier Premium

Caractéristiques :

- Height Elevation: Raises workbench height by 60mm (total base height 78mm) for improved ergonomics.
 - Efficient Storage: Allows for easy storage of tool carriages beneath your workbench.
 - Durable Construction: High-quality steel build ensures long-lasting durability.
- Upgrade your workshop with the Unior 990NDU BLACK Underbase.





627689



60

L

442

B

640

H

78



6400

* Les images des produits ne sont pas contractuelles. Toutes les dimensions sont en mm, les poids en grammes.