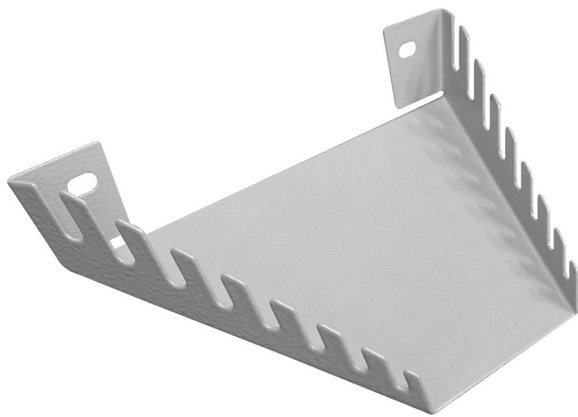


Houder voor sleutels

h.990.WRE

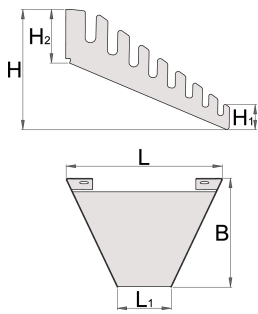




Profielen



Product attributen

- materiaal: premium plaatstaal 1 mm
- assembly on the perforated Unior wall with screws M6x10
- assembly on the wall at an angle of 67° which allows better transparency and use of the wrenches
- 8 pcs of open end wrenches or 8 pcs of offset ring wrenches can be stored on the holder (up to dim. 24mm)



	L	L1	B	H	H1	H2	
629756	197	68	138	84,8	15,4	39	206

* Afbeeldingen van producten zijn symbolisch. Alle afmetingen zijn in mm en gewicht in gram. Alle vermelde afmetingen kunnen variëren in tolerantie.

Gebruik (Afbeeldingen)

