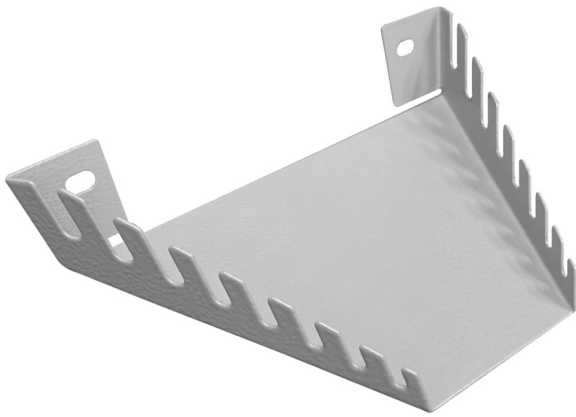


扳手架

h.990.WRE

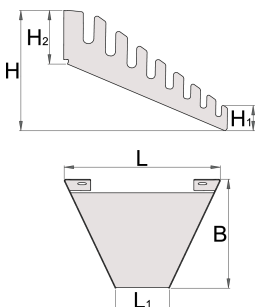


配置文件



□□□□

- 材料：□□金属板材1mm
- 用M6x10螺□在穿孔的□面□上□装
- 装配在背板上67°以下角度,允□更大的透明度和扳手的使用。
- 可存放8只开口扳手或8只高□梅花扳手(□格24mm)





L

L1

B

H

H1

H2



629756

197

68

138

84,8

15,4

39

206

* Images of products are symbolic. All dimensions are in mm, and weight in grams. All listed dimensions may vary in tolerance.

用途 (pictures)

