

# Adaptor for tap BSA

1697.2/4

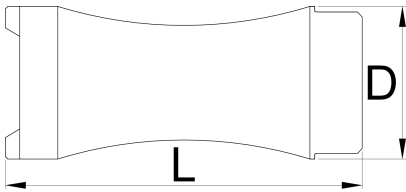


## Profiles



## Product features

- Adaptor is compatible with taps BSA 1697.1 and magnetic handle 1695/4BI for reamers and taps. Slot on the top of the adaptor enables quick and easy assembly of the tool together with the handle for reamers and taps 1695/4BI.



626467

L

75

D

32



240

\* Ürünlerin resimleri semboliktir. Bütün boyutlar mm ve ağırlık gram cinsindedir.

# Spare parts



1697 - BSA için yedek kılavuzlar