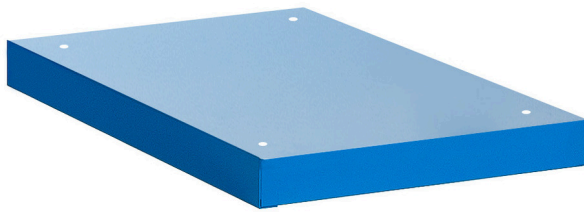


Onderstel voor smalle ladekast

990NDU



Profielen

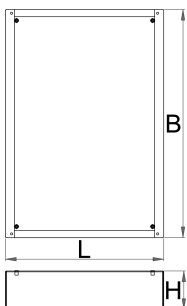


Product attributen

- materiaal: premium plaatstaal

Features:

- Height Elevation: Raises workbench height by 60mm (total base height 78mm) for improved ergonomics.
 - Efficient Storage: Allows for easy storage of tool carriages beneath your workbench.
 - Durable Construction: High-quality steel build ensures long-lasting durability.
- Upgrade your workshop with the Unior 990NDU Underbase.



|  |  | L | B | H |  |
|---|--|-----|-----|-----|--|
| 627053 | 30 | 442 | 640 | 48 | 5407 |
| 625643 | 60 | 442 | 640 | 78 | 6400 |
| 625743 | 90 | 442 | 640 | 108 | 7200 |
| 625644 | 120 | 442 | 640 | 138 | 8000 |

* Afbeeldingen van producten zijn symbolisch. Alle afmetingen zijn in mm, en het gewicht in grammen. Alle vermelde afmetingen kunnen variëren in tolerantie.