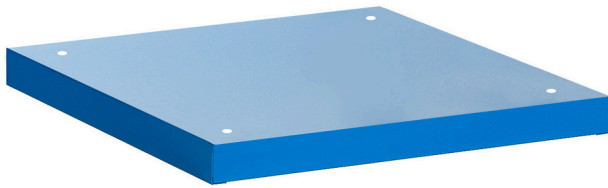


Suport carucior lat de scule

990WDU



Profile

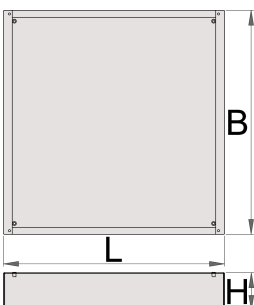


Caracteristicile produsului

- confectionat din tabla

Features:

- Height Elevation: Raises workbench height by 60mm (total base height 78mm) for improved ergonomics.
 - Efficient Storage: Allows for easy storage of tool carriages beneath your workbench.
 - Durable Construction: High-quality steel build ensures long-lasting durability.
- Upgrade your workshop with the Unior 990WDU Underbase.



		L	B	H	
627052	30	630	640	48	7200
625641	60	630	640	78	8200
625742	90	630	640	108	9200
625642	120	630	640	138	10000

* Imaginea produsului este simbolica.Toate dimensiunile sunt exprimate în mm,greutatea în grame.