

Universal adaptor for rear stand

3001.1



Profiles



Product features

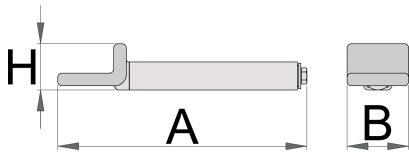
- material: constructional steel
- surface finish: chrome plated according to ISO 1456:2009

Advantages:

- adaptors are PVC coated
- quick-change adaptors and setting stands
- reliable mounting into the groove of the motorcycle front fork

Usage:

- mounting on the rear swinging arm of the motorcycle
- it is suitable for almost all type of motorcycles
- use together with base 3001.3



624326

182

44

33

893

* Images of products are symbolic. All dimensions are in mm, and weight in grams. All listed dimensions may vary in tolerance.