

405/1BI



## 配置文件

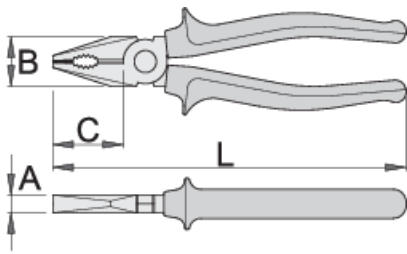
---



ISO 5746



- 材料：特种工具□
- 落□，完全淬火与回火
- 切削刃感□淬火
- □□□□
- 表面□理：依据ISO 1456:2009□□□□□□
- 重型双成分材料手柄
- 根据ISO 5746□□□□



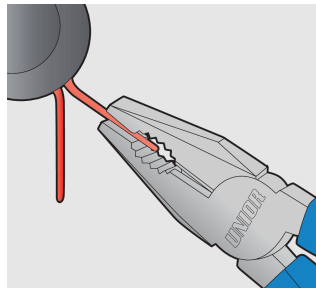
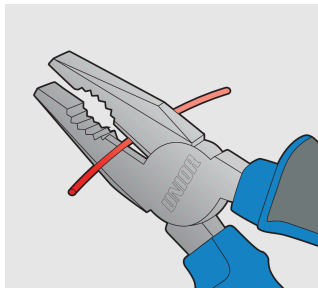
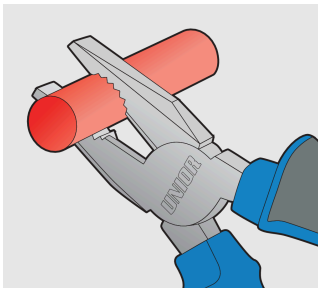
Barcode	L	B	C	A	Weight
607867	160	24	35	9.5	224
607868	180	27	38	10	273
607869	200	29	41	10.5	351

cutting capacity (10N=1kg)

Barcode	L	max 1600 N/mm <sup>2</sup> Ø↑	max 650 N/mm <sup>2</sup> Ø↑
607867	160	1,6	2,0
607868	180	1,8	2,5
607869	200	2,0	2,5

\* Images of products are symbolic. All dimensions are in mm, and weight in grams. All listed dimensions may vary in tolerance.

## 用途 (pictures)



## Safety tips



- Pliers should be oiled regularly. A drop of oil at the hinge will lengthen the tool life and assure easy operation.
- When cutting wire with pliers, you should always wear glasses or goggles.
- Handles are provided for comfort. They are not intended to give user any degree of protection against electric shocks and



- Don't use pliers for cutting hardened wire, unless specifically manufactured for this purpose.
- Don't expose pliers to excessive heat. This may ruin the tool.
- Don't use pliers as a hammer.

should never be used on live electric circuits.

- Don't hammer on the handles. They may crack or break.
- Don't extend the length of plier handles to secure greater leverage.
- Don't use pliers on nuts or bolts. A wrench will do a better job and with less risk of damage to the fastener.