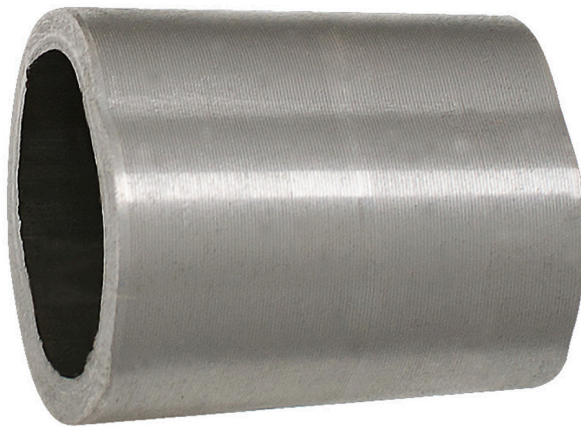


# Cuña para martillos










812.2



## Perfiles



	812	812A	820	820A	810	830	817	
609626	100	100	22	22				2
605095	150, 200	150, 200	27	27				30
605096	250, 300	250, 300	32	32				30
605097	400	400				400		30
605098	500, 600	500, 600	40	40	700			30
605099	800,1000, 1250	800,1000, 1250	50, 60	50, 60			1000, 1250	30

								
605100	1500, 2000	1500, 2000					1500, 2000	30

\* Las imágenes de los productos son simbólicas. Todas las dimensiones son en mm, peso en gramos.