

# Kliješta za rezanje žice, kosa

461/1VDEDP



## Profili



## Standardi

DIN EN IEC 60900 (VDE 0682-201):2019-04; EN IEC 60900:2018

## Atributi proizvoda

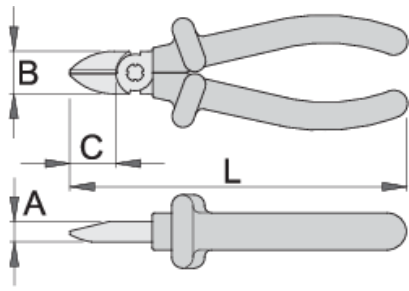
- materijal: poseban alatni čelik
- kovana, potpuno poboljšana i ojačana
- rezni rubovi induktivno kaljeni
- čeljusti polirane
- završna obrada: kromiranje po standardu ISO 1456:2009
- izrađeno po standardu ISO5749 i EN IEC 60900

## Prednosti:

- ručke izolirane sa dva izolacijska sloja u dvije boje, koje omogućavaju dodatnu sigurnost

## Važno!

- ukoliko drugi sloj postane vidljiv, alat zamijenite novim.



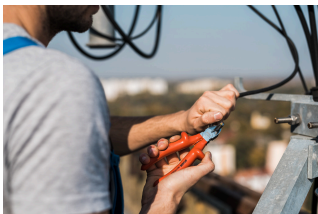
Barcode	L	B	A	C	Weight
619193	140	19	9.5	18	174
619194	160	22.5	10	22	224

sposobnost rezanja (10K=1kg)

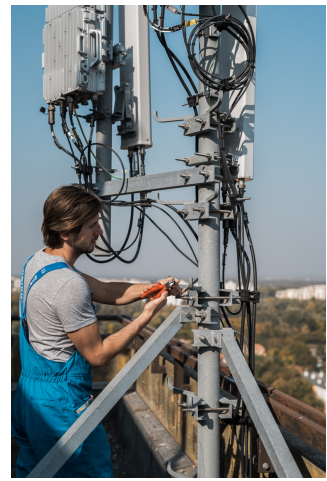
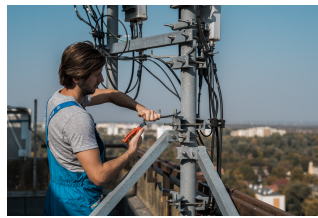
Barcode	L	max 1600 N/mm <sup>2</sup> Ø↑	max 650 N/mm <sup>2</sup> Ø↑
619193	140	1,6	2,0
619194	160	1,6	2,5

\* Slike proizvoda su simbolične. Sve dimenzije su u mm, masa je u g.

## Upotreba (pictures)



## Photo (pictures)



## Frequently asked questions

### **Are certified insulated tools made through a different procedure than non-certified insulated tools?**

The tools are made according to the same procedure.

### **Are insulated (VDE) tools considered as personal protective equipment (PPE)?**

According to EU regulations, VDE tools are not considered as PPE.

### **Is it possible to work with insulated pliers under electrical voltage?**

Yes, but only by professionals who follow safety requirements and use additional personal protective equipment.

### **Are the VDE tools only being sampled in series production?**

The high voltage test (at 10kV) is performed fully on each tool. Other tests are performed in accordance with the EN60900 standard.