

Diagonal-Seitenschneider

461/1VDEDP



Profile



Standards

DIN EN IEC 60900 (VDE 0682-201):2019-04; EN IEC 60900:2018

Produkteigenschaften

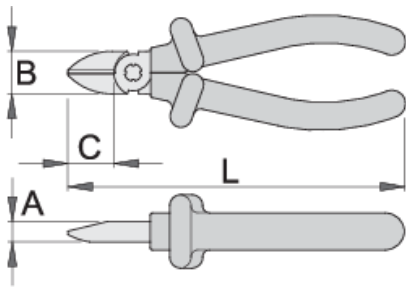
- Material: Premium Plus Kohlenstoffstahl
- geschmiedet und vergütet
- Schneiden induktiv gehärtet
- Kopf poliert
- verchromt nach Standard ISO 1456:2009
- gefertigt laut Standard ISO 5749 und EN IEC 60900

Vorteile:

- Doppelte, zweifarbige Schutzisolierung

Wichtig!

- Wenn die zweite Schutzisolierung erkennbar ist, muss das Werkzeug ersetzt werden



Barcode	L	B	A	C	Weight
619193	140	19	9.5	18	174
619194	160	22.5	10	22	224

Schneidwerte (10N=1kg)

Barcode	L	max 1600 N/mm ² Ø↑	max 650 N/mm ² Ø↑
619193	140	1,6	2,0
619194	160	1,6	2,5

* Bilder von Produkten sind Symbolfotos. Abmessungen sind in mm, Gewichte in Gramm.

Verwendung (Bilder)

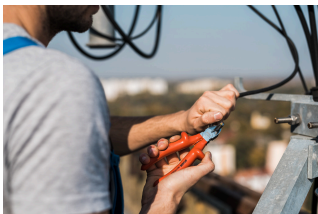
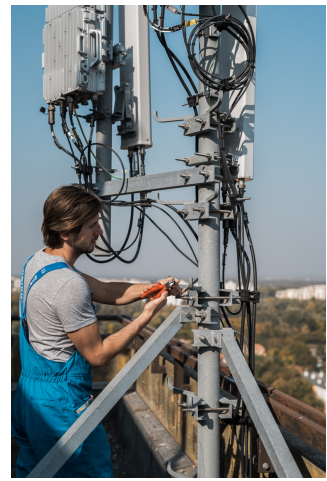
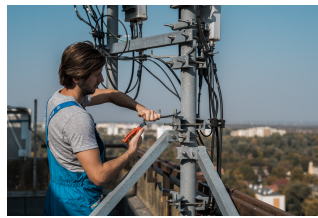


Foto (Bilder)



Häufig gestellte Fragen

Are certified insulated tools made through a different procedure than non-certified insulated tools?

The tools are made according to the same procedure.

Are insulated (VDE) tools considered as personal protective equipment (PPE)?

According to EU regulations, VDE tools are not considered as PPE.

Is it possible to work with insulated pliers under electrical voltage?

Yes, but only by professionals who follow safety requirements and use additional personal protective equipment.

Are the VDE tools only being sampled in series production?

The high voltage test (at 10kV) is performed fully on each tool. Other tests are performed in accordance with the EN60900 standard.