

水口

447/1VDEDP



配置文件



□□

DIN EN IEC 60900 (VDE 0682-201):2019-04; EN IEC 60900:2018

□□□□

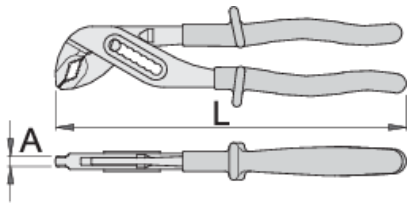
- 材料：□□□
- 落□，完全淬火与回火
- 工作表面感□淬火
- 表面□理：依据ISO 1456:2009□□□□□□
- 根据ISO 8976□□□EN IEC 60900生□



□□□

- 通□双□涂料□□的把手 —— 提供□外安全的双色□□保□
- □□□7□□□□□□
- 一□特殊凸起防止□子□□手指

重要事□！

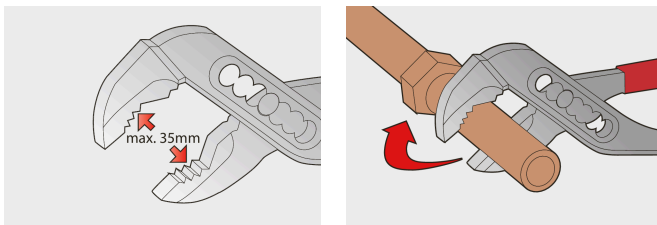
- 如果第二個露出來，立即更換您的VDE工具



	L	A	Omax	
619199	240	6.5	35	382

* Images of products are symbolic. All dimensions are in mm, and weight in grams. All listed dimensions may vary in tolerance.

用途 (pictures)



Frequently asked questions

Are certified insulated tools made through a different procedure than non-certified insulated tools?

The tools are made according to the same procedure.

Are insulated (VDE) tools considered as personal protective equipment (PPE)?

According to EU regulations, VDE tools are not considered as PPE.

Is it possible to work with insulated pliers under electrical voltage?

Yes, but only by professionals who follow safety requirements and use additional personal protective equipment.

Are the VDE tools only being sampled in series production?

The high voltage test (at 10kV) is performed fully on each tool. Other tests are performed in accordance with the EN60900 standard.