

# Kliješta, univerzalna

447/1VDEDP



## Profili



## Standardi

DIN EN IEC 60900 (VDE 0682-201):2019-04; EN IEC 60900:2018

## Atributi proizvoda

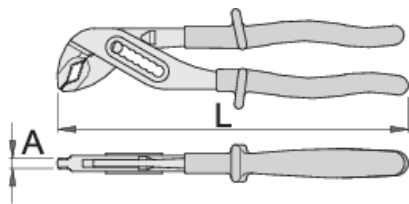
- materijal: krom-vanadij
- kovana, potpuno poboljšana i ojačana
- prihvatne površine induktivno zakaljene
- završna obrada: kromiranje po standardu ISO 1456:2009
- izrada prema standardu ISO8976 i EN IEC 60900


## Prednosti:

- ručke izolirane sa dva izolacijska sloja u dvije boje, koje omogućavaju dodatnu sigurnost
- podešavanje otvora čeljusti u 7 položaja
- Posebna izbočina sprječava uklještenje prstiju između drški kliješta

## Važno!

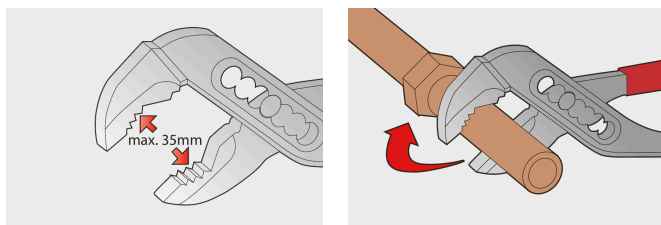
- ukoliko drugi sloj postane vidljiv, alat zamijenite novim.



|  |     |     |      |   |
|--|-----|-----|------|---|
|  | L   | A   | Omax |  |
| 619199   | 240 | 6.5 | 35   | 382   |

\* Slike proizvoda su simbolične. Sve dimenzije su u mm, masa je u g.

## Upotreba (pictures)



## Frequently asked questions

### **Are certified insulated tools made through a different procedure than non-certified insulated tools?**

The tools are made according to the same procedure.

### **Are insulated (VDE) tools considered as personal protective equipment (PPE)?**

According to EU regulations, VDE tools are not considered as PPE.

### **Is it possible to work with insulated pliers under electrical voltage?**

Yes, but only by professionals who follow safety requirements and use additional personal protective equipment.

### **Are the VDE tools only being sampled in series production?**

The high voltage test (at 10kV) is performed fully on each tool. Other tests are performed in accordance with the EN60900 standard.