

Wasserpumpenzange

447/1VDEDP



Profile



Standards

DIN EN IEC 60900 (VDE 0682-201):2019-04; EN IEC 60900:2018

Produkteigenschaften

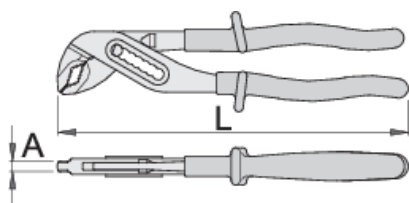
- Material: Premium Chrom-Vanadium-Stahl
- geschmiedet und vergütet
- Zähne induktiv gehärtet
- verchromt nach Standard ISO 1456:2009
- gefertigt laut Standard ISO 8976 und EN IEC 60900


Vorteile:

- Doppelte, zweifarbige Schutzisolierung
- 7-fach verstellbar
- Die speziell geformten Griffe verhindern ein Einklemmen der Finger

Wichtig!

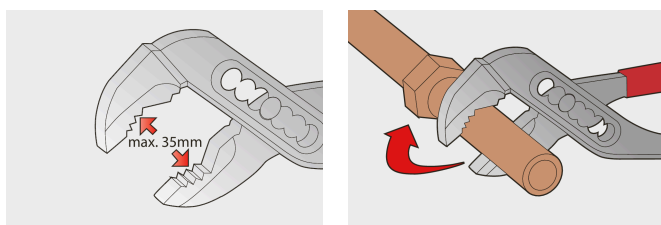
- Wenn die zweite Schutzisolierung erkennbar ist, muss das Werkzeug ersetzt werden



	L	A	Omax	
619199	240	6.5	35	382

* Bilder von Produkten sind Symbolfotos. Abmessungen sind in mm, Gewichte in Gramm.

Verwendung (Bilder)



Häufig gestellte Fragen

Are certified insulated tools made through a different procedure than non-certified insulated tools?

The tools are made according to the same procedure.

Are insulated (VDE) tools considered as personal protective equipment (PPE)?

According to EU regulations, VDE tools are not considered as PPE.

Is it possible to work with insulated pliers under electrical voltage?

Yes, but only by professionals who follow safety requirements and use additional personal protective equipment.

Are the VDE tools only being sampled in series production?

The high voltage test (at 10kV) is performed fully on each tool. Other tests are performed in accordance with the EN60900 standard.