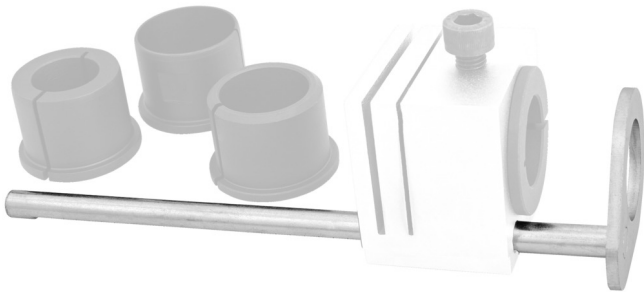


适用于切割□向器的量□

1604.1/2PLUS

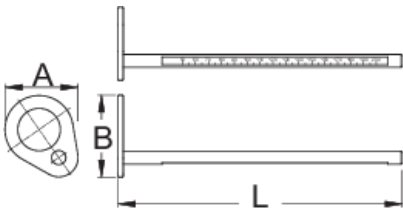


配置文件



□□□□

- □□□□1604.1/2PLUS的量□与□号□1604/2PLUS切割□向器装置相配合，可以快速且精确地确定切割后□向管所需的□度。



623418

A

57

B

64

L

220



174

* Images of products are symbolic. All dimensions are in mm, and weight in grams. All listed dimensions may vary in tolerance.