

1" 气口附件

233.8/4



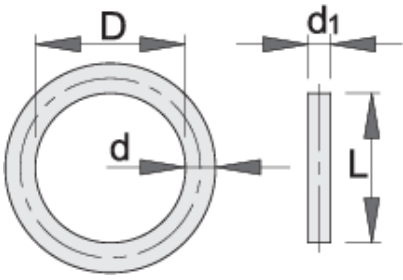
配置文件



□□□□

- □□□: □□□
- □□□□□

- 表面光洁度:按DIN□□□□



Barcode	Length Range	D	d	L	d1	Weight
615254	22 - 70	46	3.5	43	5	21
615255	75 - 80	75	5.7	75	6	38

* Images of products are symbolic. All dimensions are in mm, and weight in grams. All listed dimensions may vary in tolerance.

用途 (pictures)



Safety (pictures)

