

1"冲□□接□

233.7/4

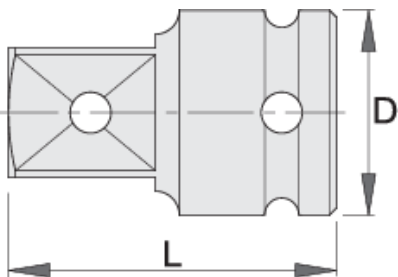


配置文件



□□□□

- 材料：□□□
- 落□，完全淬火与回火
- 表面□理：根据ISO 9717□□□□□□□□



615217	1" - 3/4"	D	L	661



D

L



617303

1" - 1.1/2"

54

90

1107

* Images of products are symbolic. All dimensions are in mm, and weight in grams. All listed dimensions may vary in tolerance.

Safety (pictures)

