

# 1/2"冲口万向口

231.6/4

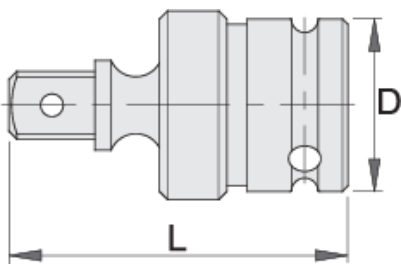


## 配置文件



□□□□

- 材料：□□□
- 落□，完全淬火与回火
- 表面□理：根据DIN12476□□□□□□□□□□



609460



1/2"

D

32

L

60



209

\* Images of products are symbolic. All dimensions are in mm, and weight in grams. All listed dimensions may vary in tolerance.

### Safety (pictures)

