

# 3/8" 冲□□接□

230.7/4

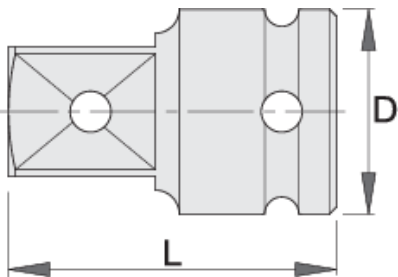


## 配置文件



□□□□

- 材料：□□□
- 落□，完全淬火与回火
- 表面□理：根据DIN12476□□□□□□□□□□



612078	3/8" - 1/2"	D	L	67

\* Images of products are symbolic. All dimensions are in mm, and weight in grams. All listed dimensions may vary in tolerance.

### Safety (pictures)

