

Flexible reversible ratchet 3/8"

238.1/1FBI



Profiles

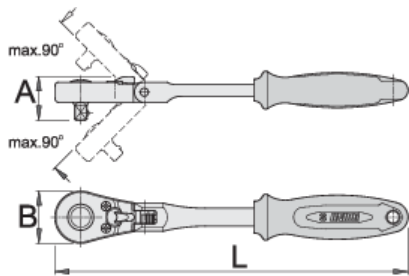


Product features

- material: premium flex chrome vanadium steel
- body drop forged
- entirely hardened and tempered
- surface finish: chrome plated to standard ISO 1456:2009
- ergonomic heavy duty double component handle

Advantages:

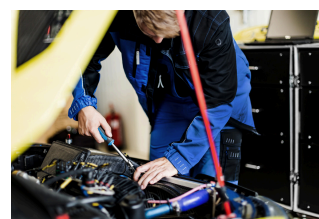
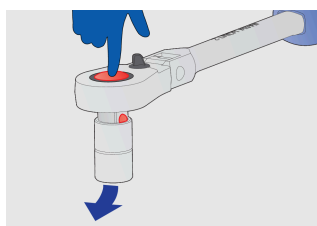
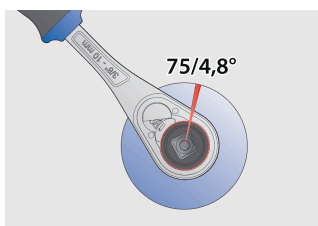
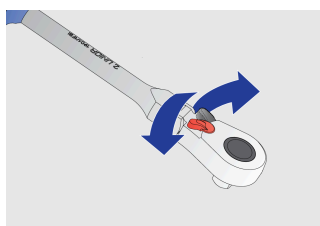
- 75 - teeth
- 4,8° working angle
- flexible ratchet allows working with the handle inclination up to max 90° with the 22,5° grade of inclination
- Safety lock system
- The socket is simple released from the ratchet by pressing the button.



618368	3/8"	260	30	35	322

* Images of products are symbolic. All dimensions are in mm, and weight in grams. All listed dimensions may vary in tolerance.

Usage (pictures)



Frequently asked questions

I wanted to loosen the wheels on the car using a ratchet, and now it isn't working. Perhaps the mechanism broke down? Did I use the right ratchet?

The ratchet article 190.1/1LG is intended for unscrewing car wheel bolts. Other ratchets in Unior's range are not designed to unscrew car wheel bolts.