

3/8" 可双向棘扳手

238.1/1FBI



配置文件

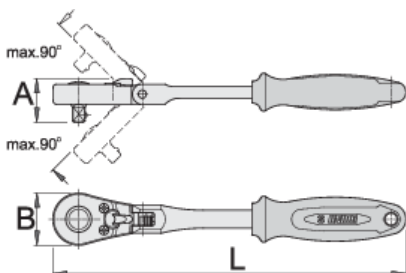


□□□□

- 材料：特种工具□
- 主体□造
- 完全淬火与回火
- 表面□理：根据ISO 1456:2009□□□□
- 符合人体工程学的重型双□材料□成的手柄

□□□

- 75 - □
- 4,8° 工作角度
- 可□棘□扳手最大可垂直90°□行作□，每次可□□角度□22.5°。
- 安全□定系□
- 只需按下按□即可从棘□扳手上□放套筒





618368



3/8"

L

260

A

30

B

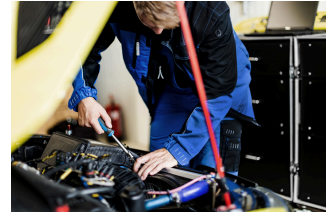
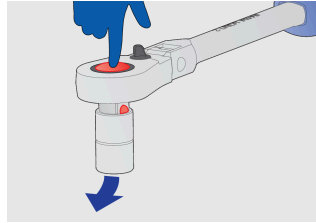
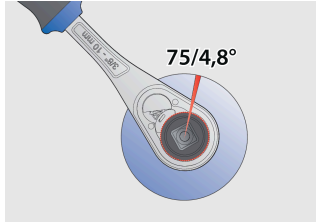
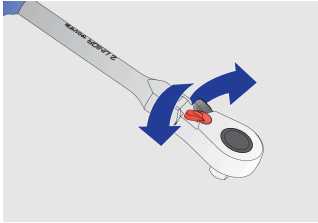
35



322

* Images of products are symbolic. All dimensions are in mm, and weight in grams. All listed dimensions may vary in tolerance.

用途 (pictures)



Frequently asked questions

I wanted to loosen the wheels on the car using a ratchet, and now it isn't working. Perhaps the mechanism broke down? Did I use the right ratchet?

The ratchet article 190.1/1LG is intended for unscrewing car wheel bolts. Other ratchets in Unior's range are not designed to unscrew car wheel bolts.