

# Flexible reversible ratchet 1/4"

Hidden

188.1/1FBI



## Profiles

---

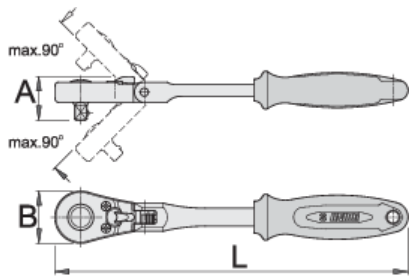
1/4" **Premium Flex** 

## Product features

- material: premium flex chrome vanadium steel
- body drop forged
- entirely hardened and tempered
- surface finish: chrome plated to standard ISO 1456:2009
- ergonomic heavy duty double component handle

## Advantages:

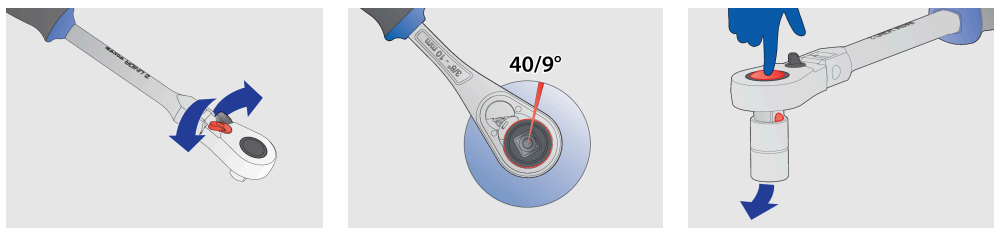
- with 40 - teeth
- 9° working angle
- flexible ratchet allows working with the handle inclination up to max 90° with the 22,5° steps
- Safety lock system
- The socket is simple released from the ratchet by pressing the button.



		<b>L</b>	<b>A</b>	<b>B</b>	
618367	1/4"	180	22	25	127

\* Images of products are symbolic. All dimensions are in mm, and weight in grams. All listed dimensions may vary in tolerance.

### Usage (pictures)



### Spare parts



Set of spare parts for 188.1/1ABI and 188.1/1FBI