

# Carrello portautensili EUROPLUS

920PLUS2



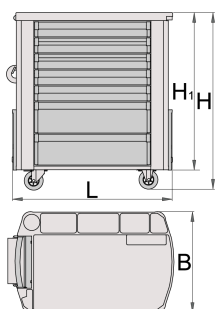
## Profili




## Attributi del prodotto

- materiale: lamiera di metallo PLUS premium
- sistema di chiusura
- serratura con chiave inclusa, portachiavi in schiuma
- nuovo meccanismo uniforme di chiusura dei cassetti con ganci
- mensola multi - funzione
- ruote diam. 125mm., per migliorarne la agilità e la stabilità
- gomme antiurto

- cassetti con guide con cuscinetti a sfere
- la copertura sintetica protegge i cassetti e gli utensili da danneggiamenti
- 7 cassetti (5 dim. 565x365x70 mm, 2 dim. 565x385x150 mm)
- dimensioni standard con maniglia e ruote 810x510x945 mm
- capacità statica di carico dei carrelli senza ruote: 2000 kg
- capacità statica di carico dei carrelli senza ruote: 2000 kg
- portata dei cassetti: 45 kg
- laccatura ecologica con colori senza cadmio e piombo
- volume totale cassetti: 137 litri
- cassetti compatibili con vassoi portautensili SOS 1/3, 2/3, 3/3
- possibilità di aggiungere accessori



|  | L   | B   | H   | H1  |  |
|--|-----|-----|-----|-----|---|
| 617101   | 810 | 510 | 945 | 796 | 75600   |

\* Le immagini dei prodotti sono puramente simboliche. Tutte le dimensioni sono in mm, peso in grammi.

## Utilizzo (pictures)



## Accessories



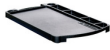
Separatori - serie 4 pezzi



Portacarta - maxi rotolo per carrello art. 920PLUS



Portabottiglie per carrello art. 920PLUS



Vassoio in ABS per carrello 920PLUS



Vassoio portautensili SOS vuoto per carrelli art. 940PLUS, 940EM, 940H, 940E e 940EV

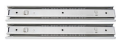


Vassoio portautensili SOS vuoto per carrelli art. 920PLUS, 940E e 940EV

## Parti di ricambio



Serratura con chiavi



Guida con cuscinetti a sfera



Set di ruote

## Safety tips



- Lock all your drawers before trying to roll the tool carriage into a new work area.
- Set the brakes on the locking casters after you have rolled the cabinet to your work area.
- Treat you tool carriage, tool chests, or tool boxes with respect.
- Always follow the prescribed max load capacity of individual drawers and the carriage as a whole.
- Always put heavier objects in the bottom drawers
- Always close drawers when not in use.
- Always follow manufacturer manual instructions regarding assembly and repair of your tools.



- Don't open two or more drawers at the same time, there is high chance of it tipping over.
- Don't throw tools into drawer, always put the tools in.
- Don't use an opened drawer as a working surface.
- Don't clean a lacquered surface with a solvent cleaner.
- Don't pull a tool carriage as you won't be able to see where you are headed. Push it in front of you so you can see where you are going.
- Don't stack a tool carriage with too many extra chests or tool trays; it may tip over at the most unexpected time.
- Don't roll a tool carriage with loose tools or parts on top of the carriage.
- Don't roll a tool carriage too quickly; a pot hole in the floor or some hardware on the floor may cause an accident.
- Don't overload the drawers; if you haven't got room for all of your tools, you need a

larger tool carriage.

- Don't open up too many loaded drawers at a time; close each drawer before opening up another. Heavily loaded opened drawers are an invitation to tipping.