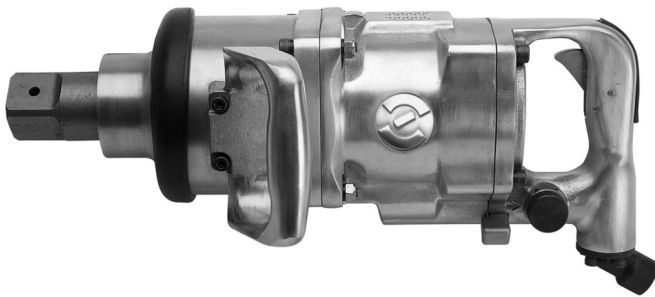


Clé à chocs 1 1/2"

1596



Profils



Description produit

- Vitesse tr/mn : 3000
- Couple max : 3388 Nm
- Pression d'air maximum : 6, 2 bars
- Consommation d'air : 410 l/min
- entrée d'air : 1/2"
- Filet maximum M45

Avantages :

- couple contrôlé
- vissage rapide
- large palette d'utilisations

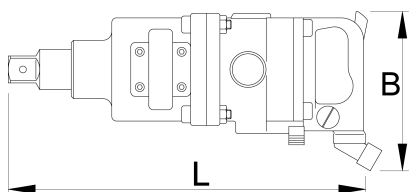
Utilisation:

- Industrie Automobile
- industrie aéronautique

- industrie agricole
- industrie lourde
- construction de machines
- industrie navale
- montage répétitif

Important !

- Toujours utiliser des douilles à chocs UNIOR



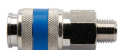
		B	L		
617690	1.1/2"	550	450	3388	17800

* Les images des produits ne sont pas contractuelles. Toutes les dimensions sont en mm, les poids en grammes.

Accessories



Embout fileté



Raccord rapide fileté



Régulateur, épurateur, lubrificateur 3/4"



Tuyau pneumatique spiralé

Safety tips



- The pressure in the tool during the operation has to be at least 6.2 bar for the tool to work properly.
- Regularly clean and dry the air filters and inlet air supply.



- Always disconnect tools not in use from the air supply.

- Always use clean and dry air with the correct mixture of oil, for maximum tool life.
- Check the joints and ensure that the tubes and other equipment are not damaged before use.
- All tools should be gently oiled prior to being stored.
- Always store pneumatic tools in dry places away from water.
- Always use original spare parts.
- Repairs can be performed only by authorised staff people authorised by Unior d.d.