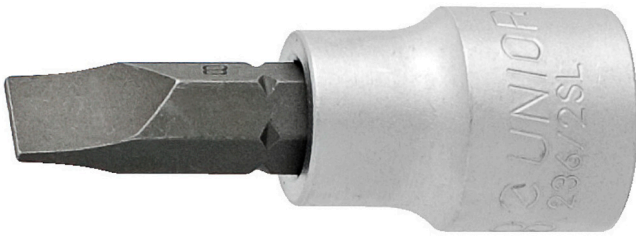


# 3/8" 平口螺口批口套筒

236/2SL

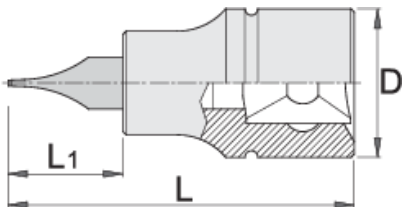





## 配置文件



□□□□

- 材料：套筒：□□□,□□
- 材料：批口：特殊的工具□, 耐油防腐□
- 完全淬火与回火



		D	L	L1	
612098	5.5	18	48	22	42
612099	8	18	48	22	45

\* Images of products are symbolic. All dimensions are in mm, and weight in grams. All listed dimensions may vary in tolerance.