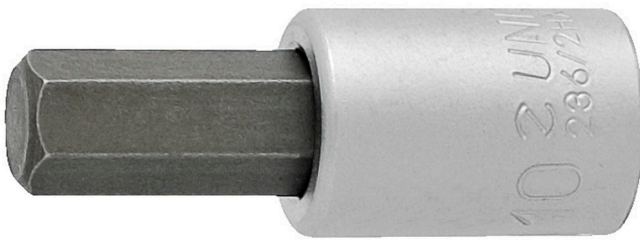


# 3/8"六角螺口批套筒

236/2HX

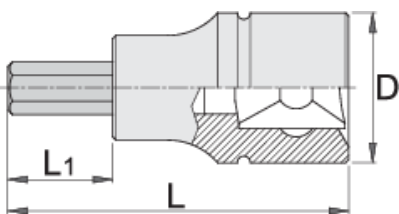


## 配置文件






□□□□

- 材料：套筒：□□□,□□
- 材料:批□:特殊的工具□, 耐油防腐□
- 完全淬火与回火
- 根据DIN7422□□□□□□□□□□□□



□□□□	□	L	L1	D	□
612082	4	48	22	18	39
612083	5	48	22	18	39
612084	6	48	22	18	41

		L	L1	D	
612085	8	48	22	18	45
612086	10	48	22	18	56
617662	1/8"	48	22	18	39
617663	9/64"	48	22	18	39
617664	5/32"	48	22	18	39
617665	3/16"	48	22	18	39
617666	7/32"	48	22	18	41
617667	1/4"	48	22	18	41
617668	5/16"	48	22	18	45
617669	3/8"	48	22	18	56

\* Images of products are symbolic. All dimensions are in mm, and weight in grams. All listed dimensions may vary in tolerance.

## Safety (pictures)

