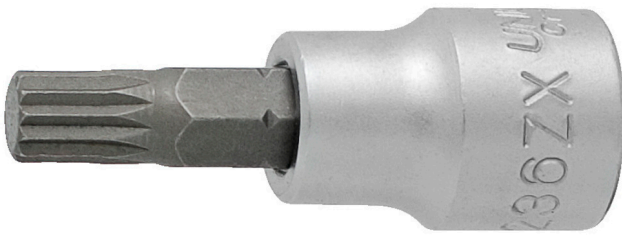


# □ZX型 3/8" 螺□批□套筒

236/2ZX

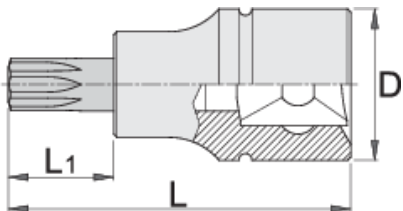





## 配置文件



□□□□

- 材料：套筒：□□□,□□
- 材料：批□：特殊的工具□，耐油防腐□
- 完全淬火与回火
- 根据DIN2324□□□□



		L	L1	D	
612113	M5	48	22	18	37
612114	M6	48	22	18	39
612115	M8	48	22	18	46

\* Images of products are symbolic. All dimensions are in mm, and weight in grams. All listed dimensions may vary in tolerance.