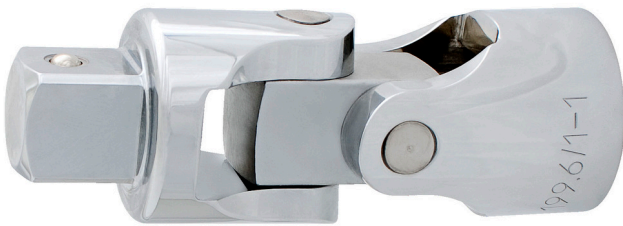


1" 万向□

199.6/1

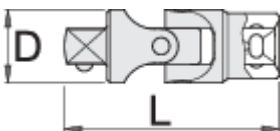


配置文件



□□□□

- 材料：□□□
- 落□，完全淬火与回火
- 表面□理：根据ISO 1456:2009□□□□
- □□□□
- 根据ISO3316□□□□



617658



1"

D

49

L

141



1120

* Images of products are symbolic. All dimensions are in mm, and weight in grams. All listed dimensions may vary in tolerance.