

Nitovacie kliešte

1300/6

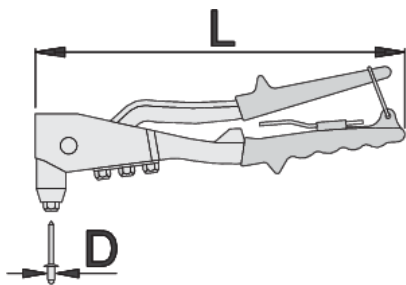




Profiles



Product features

- The usability of the Unior 1300/6 Hand Riveter is its standout feature. Whether you're working on automotive repairs, metal fabrication, or projects at home, this tool provides the necessary leverage and control to securely fasten rivets with precision. Its ergonomic design reduces hand fatigue, allowing for extended working sessions without discomfort. The tool's simple mechanism enables quick rivet installation, enhancing efficiency and productivity in any workshop or job site environment. The Uniortools 1300/6 Hand Riveter is aimed at professionals in the fields of engineering, construction, and manufacturing, as well as hobbyists who require a reliable tool for occasional use.
- materiál: rám z hliníkovej zliatiny, páka rukoväte z ocelevej zliatiny
- rukoväť: ergonomicky tvarovaná
- vratná pružina
- dodávané so 4 nastavcami na nitovanie do 4, 8mm alebo 3/16"
- s kľúčom na výmenu nastavcov



	L	D1	D2	D3	D4	
615454	270	2.4 (3/32")	3.2 (1/8")	4.0 (5/32")	4.8 (3/16")	700

* Obrázky sú symbolické. Všetky rozmery sú v mm, hmotnosť je v g. Všetky udané rozmery sa môžu líšiť v rámci tolerancie.

Usage (pictures)

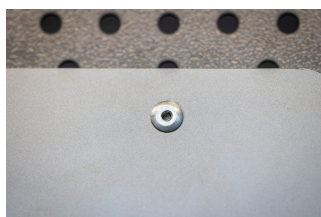
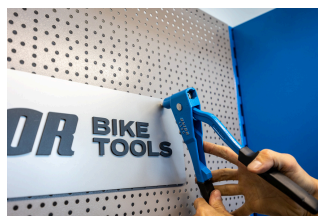
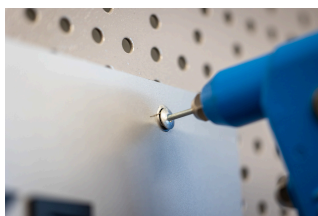


Photo (pictures)



Frequently asked questions

Sú k dispozícii nitovacie kliešte s nitmi?

Položka 1300 má pribalené nity, zatiaľ čo položka 1301 nemá pribalené žiadne nity.