

Torque multiplier

280



Profiles



Product features

- 5:1 torque multiplication, accuracy guaranteed better than +/-4%
- supplied with two reaction bar styles for maximum versatility
- Robust construction means minimal maintenance and long life
- Supplied in a carrying case. Ideal for inclusion in the heavy vehicle tool kit

Advantages:

- Exactly defined multiplication - no need of tabular conversions
- Simple use does not require any additional knowledge

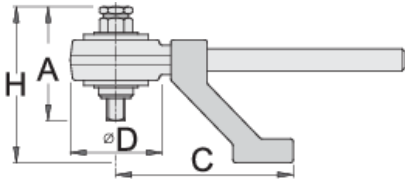
Usage:

- building construction
- agricultural equipment
- heavy industry
- larger construction machinery

- shipbuilding industry
- aircraft industry
- train compositions
- refineries

Important!

- The use of Unior IMPACT sockets is recommended.
- We shall never exceed the requested torque starting point of the multiplier.



Barcode	Socket Size	Inner Diameter	Nm	lbf.ft	Ratio	D	A	C	H	Weight
616804	1/2" (32mm)	3/4"	1300	960	5 : 1	108	126	210	180	7000
616805	3/4" (36mm)	1"	2700	2000	5 : 1	108	128	210	186	7000

* Images of products are symbolic. All dimensions are in mm, and weight in grams. All listed dimensions may vary in tolerance.

Usage (pictures)

