

# Insulated adjustable wrench

250/1VDP



## Profiles



## Standards

DIN EN IEC 60900 (VDE 0682-201):2019-04; EN IEC 60900:2018

## Product features

- material: premium chrome vanadium steel
- surface finish: chrome plated according to ISO 1456:2009
- made according to standard ISO 6787 and EN IEC 60900:2018

## Advantages:

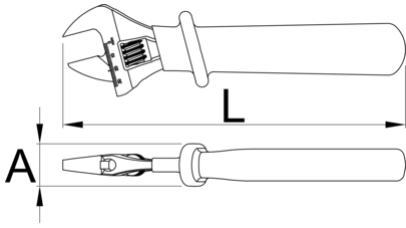
- double layered - double coloured insulation for additional safety
- controlled according to standard EN IEC 60900
- with scale

## Important!

- if second layer is visible, replace your insulated tool with a new one.

## Caution!

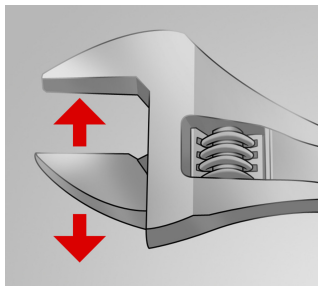
- Adjust the tool before using! Adjustment while working is life dangerous.



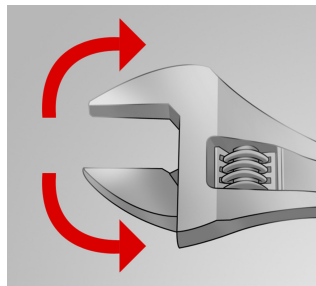
|        |     |     | L   | A  |    |      |
|--------|-----|-----|-----|----|----|------|
| 621917 | 150 | 6"  | 165 | 25 | 19 | 182  |
| 616849 | 200 | 8"  | 210 | 31 | 24 | 355  |
| 616850 | 250 | 10" | 260 | 31 | 27 | 579  |
| 616851 | 300 | 12" | 310 | 32 | 34 | 871  |
| 622065 | 380 | 16" | 390 | 37 | 41 | 1505 |

\* Images of products are symbolic. All dimensions are in mm, and weight in grams. All listed dimensions may vary in tolerance.

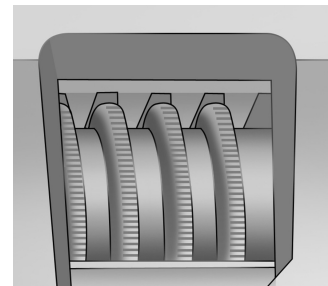
## Usage (pictures)



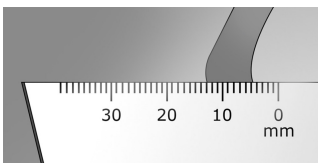
The adjustable jaw



The wrench sustains both directions of rotation



Toothed adjustable screw



Measuring scale

## Spare parts



Spare parts for adjustable wrench 250/1, 250/1A

## Safety tips



- Discard any wrench with a spread or damaged fixed jaw or a bent handle