

160/2



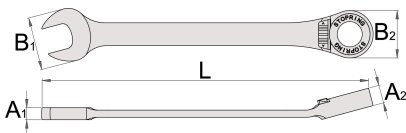
### 配置文件









- 材料：□□□
- 落□，完全淬火与回火



- 棘□：□个方向均可，可通□按□更□
- 72 - □□5°□□□□
- 扳手棘□部分上的止□□可防止扳手在螺母上意外滑落
- 可以方便快捷的□固螺母，且不会□用□造成□失，同□□可以□□使扳手快速准确定位。

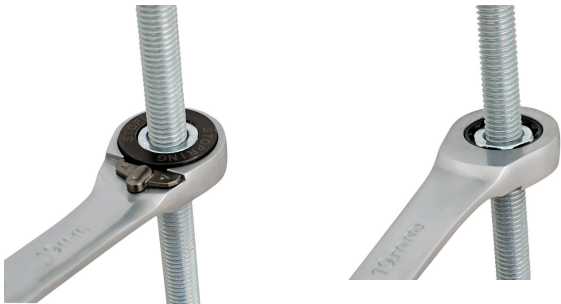


		L	B2	B1	A2	A1	
622818	8	134	17,1	16,7	8,4	4,7	40
622819	9	158	21	21	8,4	5,5	55
622820	10	158	21	21	8,4	5,5	60

		L	B2	B1	A2	A1	
622821	11	164	22,6	23	9,7	6	70
622822	12	167	23,8	25	9,7	6,2	80
622823	13	177	24,9	27,5	9,7	6,0	96
622824	14	189	27	29	10,1	7	125
622825	15	198	28,1	31,5	11,7	7,2	150
622826	16	204	29,9	33	11,7	7,5	165
622827	17	224	31,9	34,9	11,7	8	183
622828	18	245	34,4	38,9	12	8,8	210
622829	19	245	34,4	38,9	19	12	230
622831	21	280	45,7	42,6	14,2	9,5	358
622832	22	280	45,7	42,6	14,2	9,5	378
622834	24	310	51,7	46,5	14,7	10	480

\* Images of products are symbolic. All dimensions are in mm, and weight in grams. All listed dimensions may vary in tolerance.

## 用途 (pictures)



## Photo (pictures)



## Frequently asked questions

**Do wrenches with a ratchet need to be oiled?**

No, the ratchet mechanism should not be oiled, but the dirt should be removed with a non-corrosive cleaning agent.