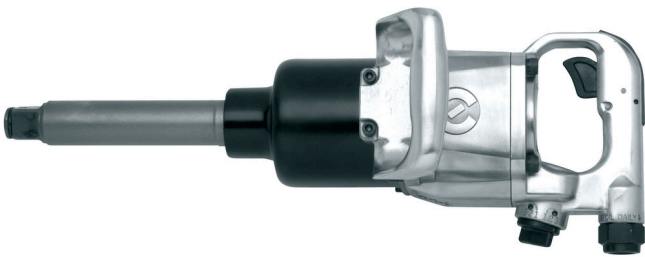


# Martello reversibile pneumatico

1591



## Profili



## Attributi del prodotto

- velocità a vuoto 4000 giri al minuto
- coppia massima 2439 Nm
- massima pressione aria: 6, 2 bar
- consumo aria: 340 l/min
- ingresso aria 1/2"
- dimensione massima bulloni M36

## Vantaggi:

- coppia controllata
- avvitamento veloce
- vasta gamma di utilizzo

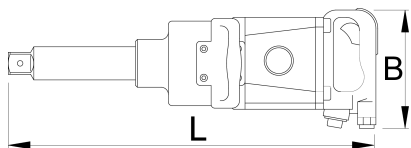
## Utilizzo:

- industria automobilistica
- industria aeronautica
- attrezzature agricole

- industria pesante
- grandi macchine edili
- industria navale
- montaggio individuale

## Importante!

- Utilizzare sempre chiavi a bussola unior IMPACT.



		<b>B</b>	<b>L</b>		
615325	1"	650	495	2439	13000

\* Le immagini dei prodotti sono puramente simboliche. Tutte le dimensioni sono in mm, peso in grammi.

## Accessories



Giunto, parte maschio



Giunto, parte femmina



Filtro regolatore e lubrificatore pneumatico 3/4"



Manichetta pneumatica a spirale

## Safety tips



- The pressure in the tool during the operation has to be at least 6.2 bar for the tool to work properly.
- Regularly clean and dry the air filters and inlet air supply.
- Always use clean and dry air with the correct mixture of oil, for maximum tool



- Always disconnect tools not in use from the air supply.

life.

- Check the joints and ensure that the tubes and other equipment are not damaged before use.
- All tools should be gently oiled prior to being stored.
- Always store pneumatic tools in dry places away from water.
- Always use original spare parts.
- Repairs can be performed only by authorised staff people authorised by Unior d.d.