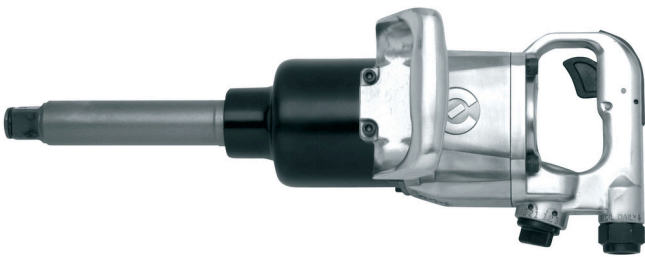


Izvijač pneumatski, prihvat 1"

1591



Profili



Atributi proizvoda

- 4.000 o/min u slobodnom hodu
- Max. okretni moment: 2439 Nm
- Max. pritisak zraka: 6, 2 bara
- Potrošnja zraka: 340 l/min
- Priključak za zrak: 1/2"
- Za vijke do M36

Prednosti:

- Kontroliran moment zatezanja
- Brzo zatezanje
- Širok spektar upotrebe

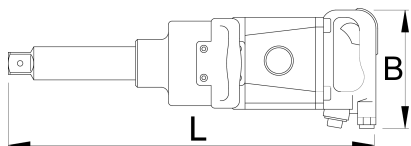
Upotreba

- Automobilska industrija
- Avionska industrija
- Poljoprivredna mehanizacija

- Teška industrija
- Veći građevinski strojevi
- Brodogradnja
- Individualna montaža

Važno!

- UVIJEK koristite Uniorove IMPACT nasadne ključeve i pribor



| | | | | | |
|--------|----|----------|----------|------|-------|
| | | B | L | | |
| 615325 | 1" | 650 | 495 | 2439 | 13000 |

* Slike proizvoda su simbolične. Sve dimenzije su u mm, masa je u g.

Accessories



Spojnica muška



Spojnica ženska



Pripremna grupa 3/4"



Cijev spiralna za zrak

Safety tips



- The pressure in the tool during the operation has to be at least 6.2 bar for the tool to work properly.

- Regularly clean and dry the air filters and inlet air supply.

- Always use clean and dry air with the correct mixture of oil, for maximum tool life.



- Always disconnect tools not in use from the air supply.

- Check the joints and ensure that the tubes and other equipment are not damaged before use.
- All tools should be gently oiled prior to being stored.
- Always store pneumatic tools in dry places away from water.
- Always use original spare parts.
- Repairs can be performed only by authorised staff people authorised by Unior d.d.