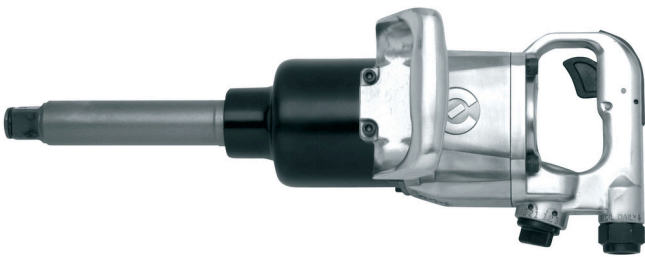


# Impact wrench

1591



## Profiles



## Product features

- free speed 4000 revolution per minutes
- max. torque 2439 Nm
- maximum air pressure: 6,2 Bar
- air consumption 340 l/min
- air inlet 1/2"
- max bolt size M36

## Advantages:

- controlled torque
- fast screwing
- wide range of use

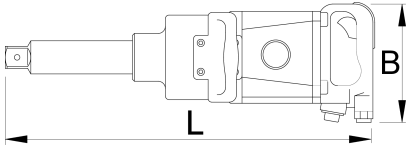
## Usage:

- car industry
- aircraft industry
- agricultural equipment

- heavy industry
- larger construction machinery
- shipbuilding industry
- individual mounting

## Important!

- Always use Unior IMPACT sockets.



		<b>B</b>	<b>L</b>		
615325	1"	650	495	2439	13000

\* Images of products are symbolic. All dimensions are in mm, and weight in grams. All listed dimensions may vary in tolerance.

## Accessories



Coupling, male part



Coupling, female part



Pneumatic filter regulator and lubricator 3/4"



Spiral pneumatic hose

## Safety tips



- The pressure in the tool during the operation has to be at least 6.2 bar for the tool to work properly.
- Regularly clean and dry the air filters and inlet air supply.
- Always use clean and dry air with the correct mixture of oil, for maximum tool



- Always disconnect tools not in use from the air supply.

life.

- Check the joints and ensure that the tubes and other equipment are not damaged before use.
- All tools should be gently oiled prior to being stored.
- Always store pneumatic tools in dry places away from water.
- Always use original spare parts.
- Repairs can be performed only by authorised staff people authorised by Unior d.d.