

682/2



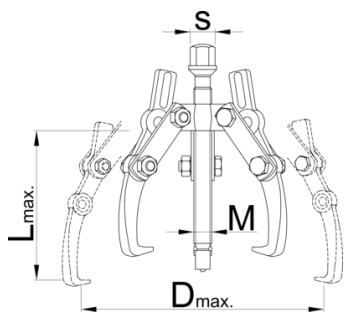
### 配置文件





- 材料：特种工具□
- 落□，完全淬火与回火
- 表面□理：根据ISO 1456:2009□□□□□□□□□□
- 拉爪□个位置可□

- 杠杆作用下拉爪密封合部件下方，然后行拆卸



Barcode	No	L↑	D↑	$F_{max}$ →	$t_{max}$ →	M	S	Weight
612604	0	90	90	25	2.5	M 10 x 1	13	305
601767	1	130	160	40	4	M 14 x 1,5	17	1725
601768	2	190	230	50	5	M 20 x 2	22	2570
601769	3	250	300	80	8	M 22 x 2	24	5100

\* Images of products are symbolic. All dimensions are in mm, and weight in grams. All listed dimensions may vary in tolerance.

## 用途 (pictures)

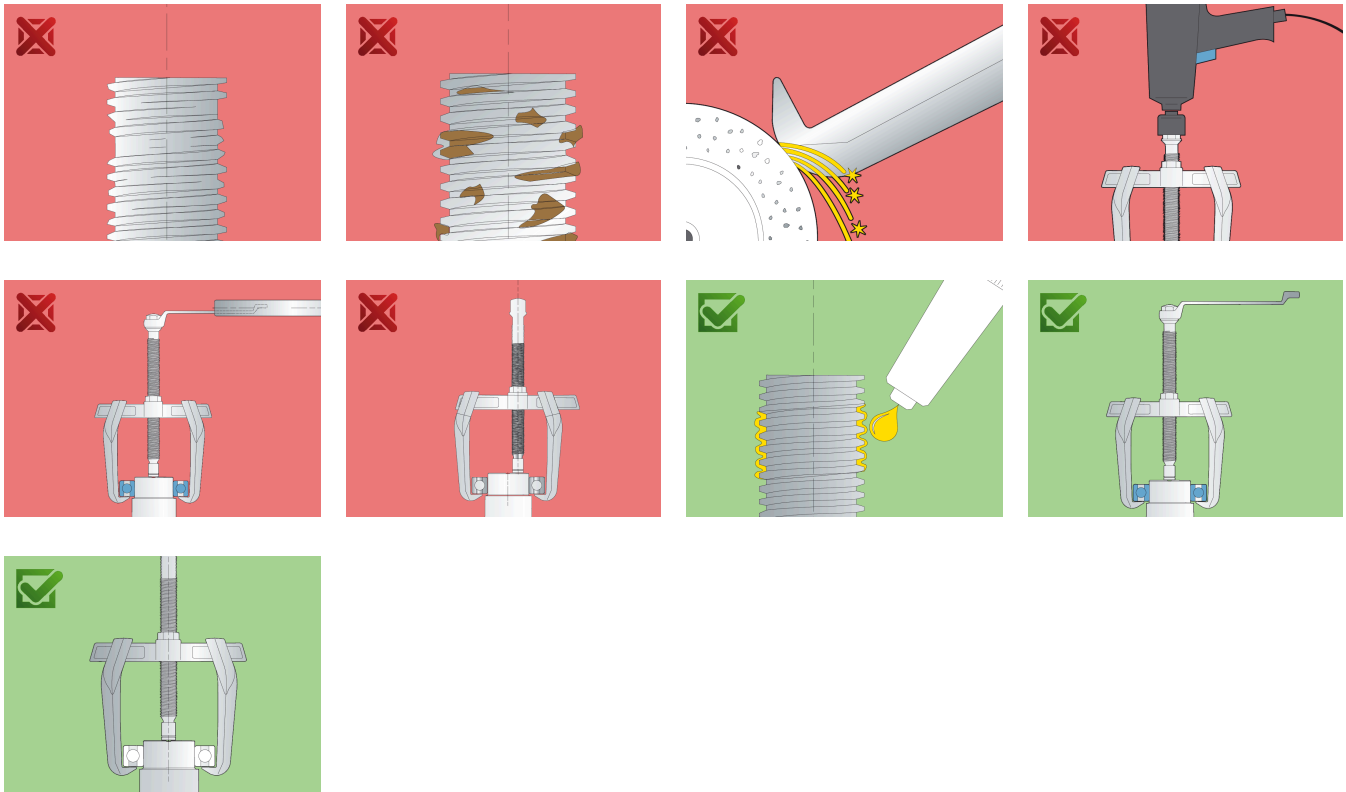


## 配件

 拉爪

 主

## Safety (pictures)



## Frequently asked questions

### **Can we achieve greater pulling force using a three-arm puller compared to a two-arm puller?**

It depends on the dimensions. In principle, yes, because the force is distributed over several arms.

### **One arm broke. Do I have to replace all the arms or just the broken one?**

It is necessary to change all the arms.