

Izvlakač trokraki

682/2



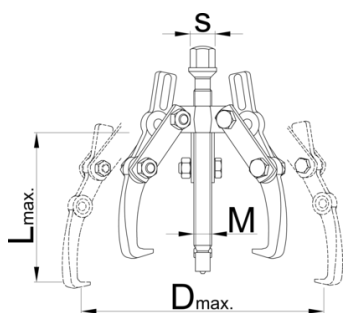
Profili



Atributi proizvoda

- materijal: poseban alatni čelik
- kovana, potpuno poboljšana i ojačana
- završna obrada: kromiranje prema standardu ISO 1456:2009, vijak bruniran
- krakovi podesivi u dva položaja po visini

- krakove dobro pričvrstiti pod doi koji se izvlači



Barcode	No	L↑	D↑	$I_{F_{max}}$ →	$I_{t_{max}}$ →	M	S	Icon
612604	0	90	90	25	2.5	M 10 x 1	13	305
601767	1	130	160	40	4	M 14 x 1,5	17	1725
601768	2	190	230	50	5	M 20 x 2	22	2570
601769	3	250	300	80	8	M 22 x 2	24	5100

* Slike proizvoda su simbolične. Sve dimenzije su u mm, masa je u g.

Upotreba (pictures)

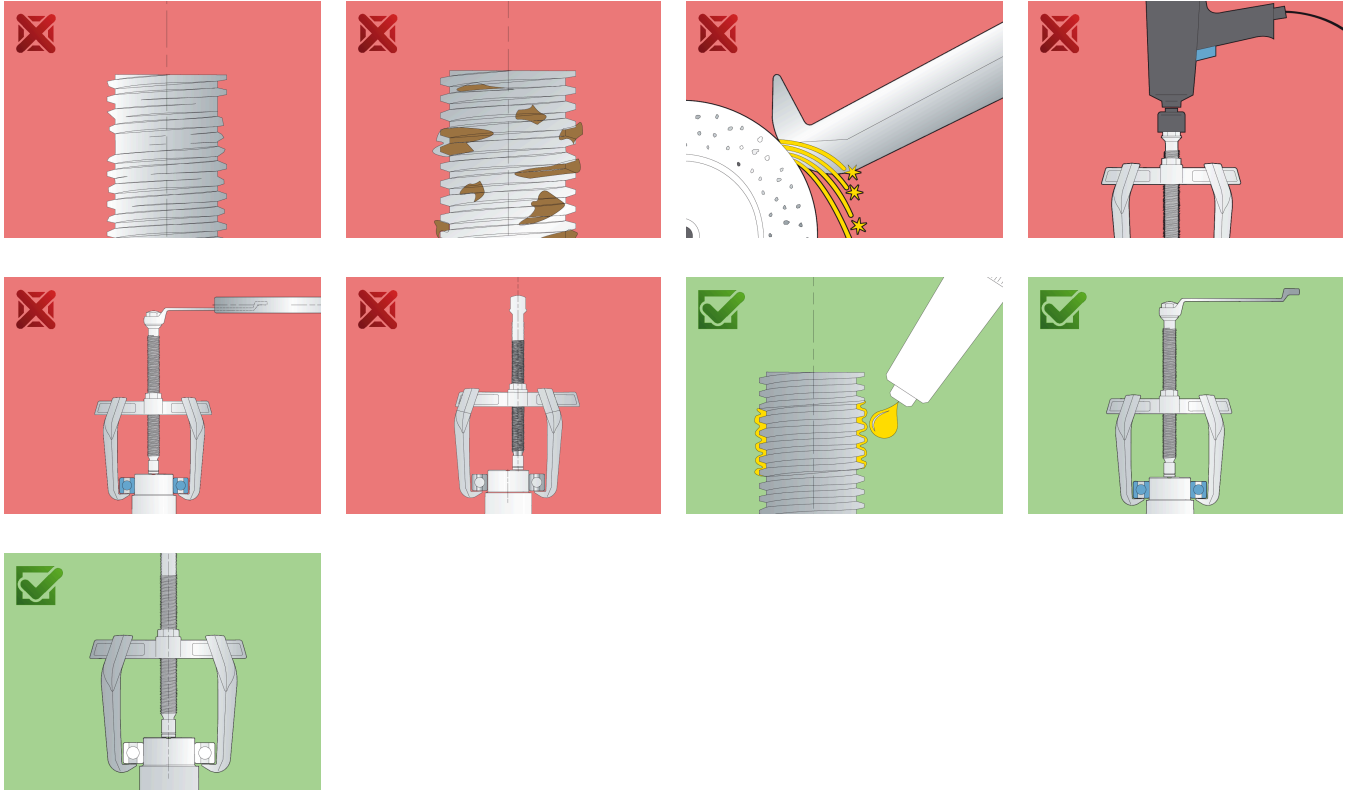


Rezervni dijelovi

 Krak

 Vreteno

Safety (pictures)



Frequently asked questions

Can we achieve greater pulling force using a three-arm puller compared to a two-arm puller?

It depends on the dimensions. In principle, yes, because the force is distributed over several arms.

One arm broke. Do I have to replace all the arms or just the broken one?

It is necessary to change all the arms.