

Puller with three adjustable arms

682/2



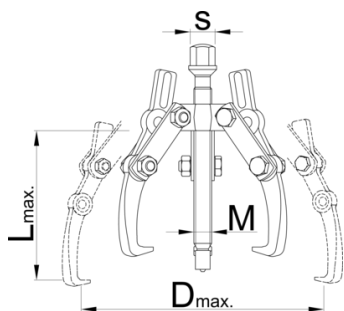
Profiles



Product features

- material: body from premium flex plus carbon steel, arm from premium chrome vanadium steel
- drop forged, entirely hardened and tempered
- surface finish: chrome plated according to ISO 1456:2009, screw blackened

- arms adjustable in two positions
- lever action claws fit closely under the part to be removed



Barcode	No	L↑	D↑	I _{Fmax} →	I _{tmax} →	M	S	Icon
612604	0	90	90	25	2.5	M 10 x 1	13	305
601767	1	130	160	40	4	M 14 x 1,5	17	1725
601768	2	190	230	50	5	M 20 x 2	22	2570
601769	3	250	300	80	8	M 22 x 2	24	5100

* Images of products are symbolic. All dimensions are in mm, and weight in grams. All listed dimensions may vary in tolerance.

Usage (pictures)

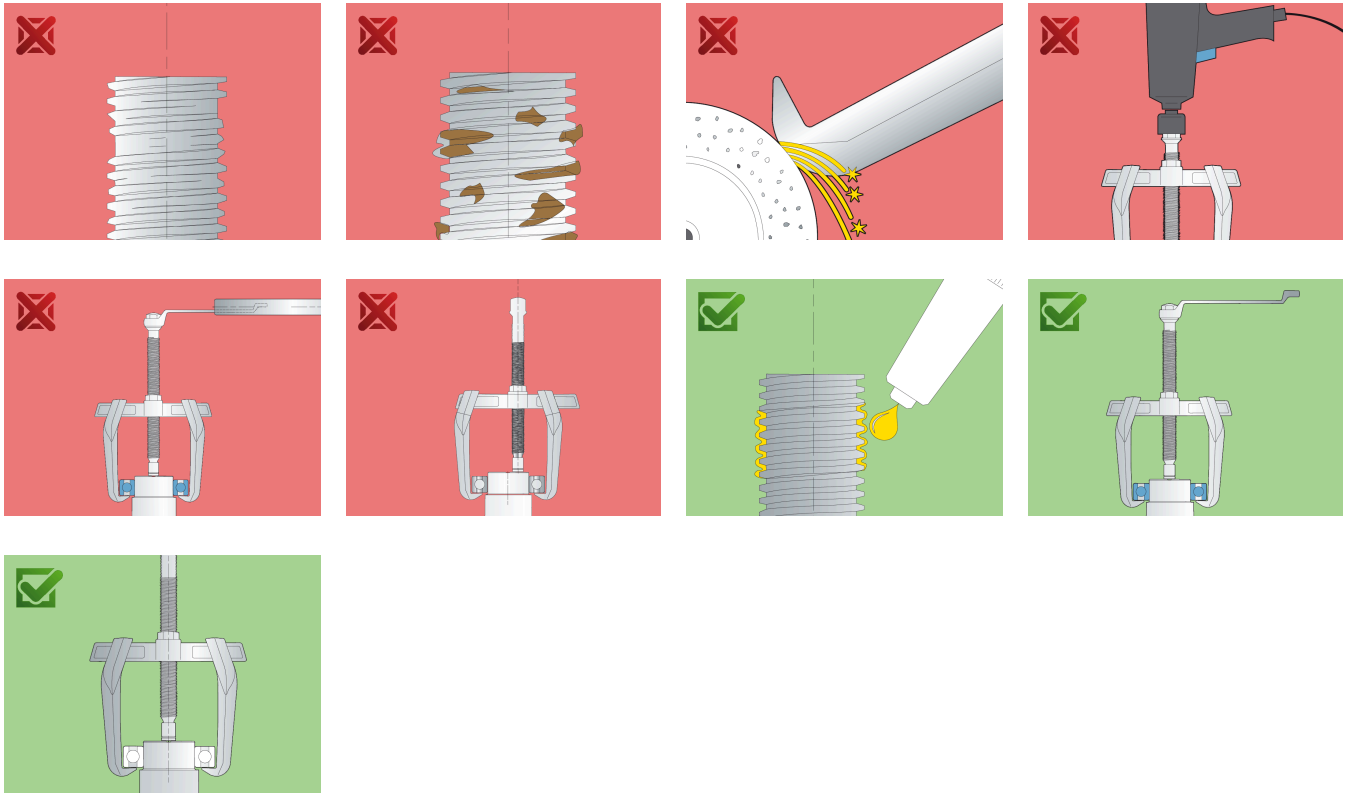


Spare parts



Arm

Safety (pictures)



Frequently asked questions

Can we achieve greater pulling force using a three-arm puller compared to a two-arm puller?

It depends on the dimensions. In principle, yes, because the force is distributed over several arms.

One arm broke. Do I have to replace all the arms or just the broken one?

It is necessary to change all the arms.