

# Surubelnite plate TBI mecanice cu hexagon

600TBI



## Profile

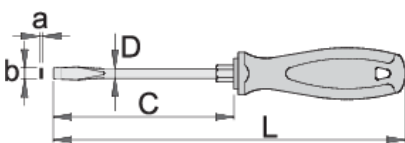


## Standarde

ISO 8764-1,2

## Caracteristicile produsului

- lama: otel crom vanadium molibden tratata integral
- lama cromata, varful brunat
- maner: forma ergonomica
- trimaterial
- gaura de agatare
- in concordanta cu standardul ISO 2380-1,2



axb

C

L

D



611680

1.0 x 5.5




100

200

5

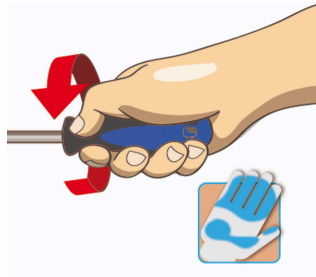
8

68

	axb	C	L	D		
611681	1.2 x 6.5	125	235	6	10	103
611682	1.2 x 8.0	150	270	7	13	143
611683	1.6 x 10.0	175	295	8	13	171

\* Imaginea produsului este simbolica. Toate dimensiunile sunt exprimate în mm, greutatea în grame.

### 0 (pictures)



### Safety (pictures)

