

Izvijač plosnati TBI

605TBI



Profili

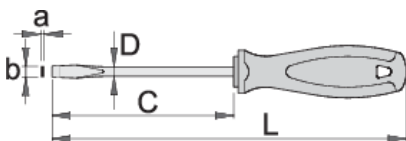




Zatvori pretraživanje



DIN ISO 2380-1:2006 i DIN ISO 2380-2:2006

Atributi proizvoda

- oštrica od Premium Hard krom-vanadijev čelika, u cjelosti ojačana i zakaljena
- tijelo kromirano, vrh bruniran
- ergonomski oblikovana ručka
- trokomponentni materijal
- otvor u dršci za vješanje
- izrađeno prema standardu ISO2380-1,2
- u cijelosti izrađen u skladu sa standardom DIN 5264

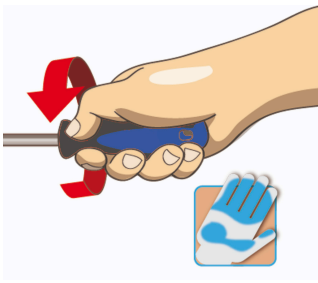


|  | axb | C | L | D |  |
|--|-----------|----|-----|-----|---|
| 612810 | 0.4 x 2.5 | 60 | 145 | 2.5 | 33 |
| 611687 | 0.4 x 2.5 | 75 | 160 | 2.5 | 34 |

|  | axb | C | L | D |  |
|---|------------|-----|-----|-----|--|
| 611688 | 0.5 x 3.0 | 80 | 165 | 3 | 35 |
| 612811 | 0.5 x 3.0 | 100 | 185 | 3 | 37 |
| 611689 | 0.5 x 3.0 | 125 | 210 | 3 | 37 |
| 612812 | 0.5 x 3.0 | 150 | 235 | 3 | 39 |
| 612813 | 0.6 x 3.5 | 75 | 160 | 3.5 | 37 |
| 611690 | 0.6 x 3.5 | 100 | 185 | 3.5 | 39 |
| 611691 | 0.6 x 3.5 | 125 | 210 | 3.5 | 40 |
| 611692 | 0.8 x 4.0 | 100 | 185 | 4 | 41 |
| 612814 | 0.8 x 4.0 | 125 | 210 | 4 | 44 |
| 611693 | 0.8 x 4.0 | 150 | 235 | 4 | 46 |
| 612815 | 0.8 x 4.0 | 200 | 285 | 4 | 53 |
| 612816 | 1.0 x 5.5 | 100 | 200 | 5 | 68 |
| 611694 | 1.0 x 5.5 | 125 | 225 | 5 | 70 |
| 611695 | 1.0 x 5.5 | 150 | 250 | 5 | 74 |
| 612817 | 1.2 x 6.5 | 100 | 210 | 6 | 93 |
| 612818 | 1.2 x 6.5 | 125 | 235 | 6 | 98 |
| 611696 | 1.2 x 6.5 | 150 | 260 | 6 | 103 |
| 611697 | 1.2 x 6.5 | 200 | 310 | 6 | 115 |
| 611698 | 1.2 x 8.0 | 175 | 295 | 7 | 143 |
| 612819 | 1.6 x 8.0 | 175 | 295 | 7 | 143 |
| 611699 | 1.6 x 10.0 | 200 | 320 | 8 | 173 |
| 611700 | 2.0 x 12.0 | 250 | 370 | 9 | 223 |

* Slike proizvoda su simbolične. Sve dimenzije su u mm, masa je u g.

upotreba (pictures)



Safety tips



- Use a screw holding screwdriver to get screws started in awkward, hard-to-reach areas.
- Use a stubby screwdriver in close quarters where a conventional screwdriver cannot be used.
- A rounded tip should be redressed with a file; make sure edges are straight.
- Screwdrivers used in the shop are best stored in a rack. This way, the proper selection of the right screwdriver can be quickly made.
- Keep the screwdriver handle clean; a greasy handle is apt to cause accidents.
- A screwdriver should never be used as pry bar. If it is overstressed in this manner, the blade might break and send a particle of steel into the operator's arm or even towards his eyes.



- Don't use pliers on the handle of a screwdriver to get extra turning power. A wrench should only be used on the square shank or bolster of a screwdriver that is especially designed for that purpose.
- Don't expose a screwdriver blade to excessive heat as it may reduce the hardness of the blade.
- Don't use a screwdriver with a split or broken handle.
- Don't use a regular screwdriver to check a storage battery or to determine if an electrical circuit is live.

Safety (pictures)

