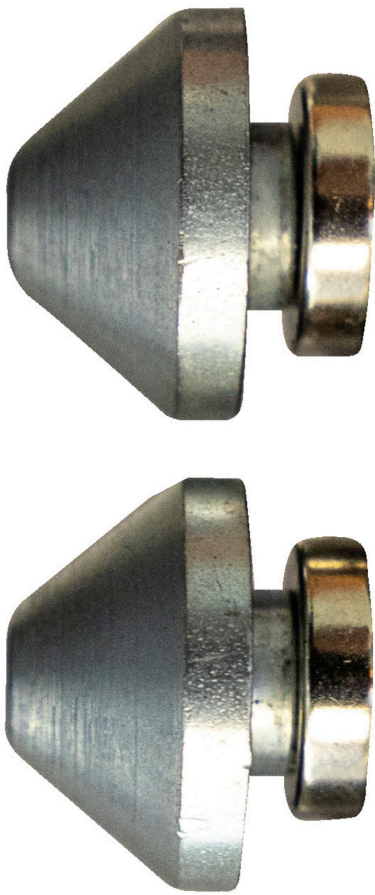


1689.3



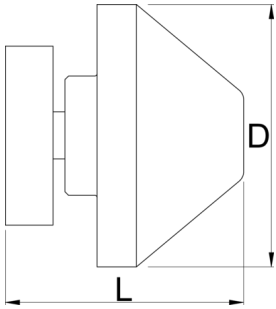
### 配置文件

---



- Through axle adapters are compatible with 12, 15 and 20mm standards.

- Magnetic so you can store them anywhere on the stand when not in use.
- Bolts to hold them securely in place in use.



|  |   |   |          |          |   |
|--|---|---|----------|----------|---|
|  |  |  | <b>D</b> | <b>L</b> |  |
| 629321   | 12, 15, 20  | 2   | 22       | 20       | 57  |

\* Images of products are symbolic. All dimensions are in mm, and weight in grams. All listed dimensions may vary in tolerance.

### 用途 (pictures)

