

# Kliješta, univerzalna

447/1VDEBI



## Profili



## Zatvori pretraživanje

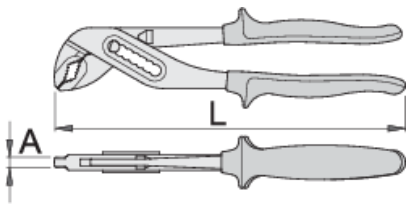
DIN EN IEC 60900 (VDE 0682-201):2019-04; EN IEC 60900:2018

## Atributi proizvoda

- materijal: Premium krom-vanadij
- kovana, potpuno poboljšana i ojačana
- prihvatne površine induktivno zakaljene
- završna obrada: kromiranje po standardu ISO 1456:2009
- robusne ručke izolirane dvokomponentnim navlakama
- izrada prema standardu ISO8976 i EN IEC 60900

## Prednosti:

- podešavanje otvora čeljusti u 7 položaja
- Posebna izbočina sprječava uklještenje prstiju između drški kliješta



L

A

Omax



611993

240

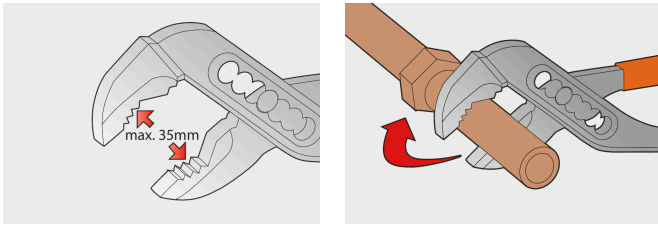
6.5

35

367

\* Slike proizvoda su simbolične. Sve dimenzije su u mm, masa je u g.

## upotreba (pictures)



## Frequently asked questions

### **Are certified insulated tools made through a different procedure than non-certified insulated tools?**

The tools are made according to the same procedure.

### **Are insulated (VDE) tools considered as personal protective equipment (PPE)?**

According to EU regulations, VDE tools are not considered as PPE.

### **Is it possible to work with insulated pliers under electrical voltage?**

Yes, but only by professionals who follow safety requirements and use additional personal protective equipment.

### **Are the VDE tools only being sampled in series production?**

The high voltage test (at 10kV) is performed fully on each tool. Other tests are performed in accordance with the EN60900 standard.