

# Insulated waterpump box joint pliers

447/1VDEBI



## Profiles



## Standards

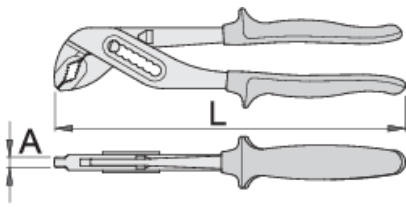
DIN EN IEC 60900 (VDE 0682-201):2019-04; EN IEC 60900:2018

## Product features

- material: premium chrome vanadium steel
- drop forged, entirely hardened and tempered
- working surfaces induction hardened
- surface finish: chrome plated to standard ISO 1456:2009
- heavy duty double - component handles
- made according to standard ISO 8976 and EN IEC 60900

## Advantages:

- jaw aperture adjustable in 7 positions
- A special bulge prevents fingers to be pressed between the handles of the pliers.



L

A

Omax



611993

240

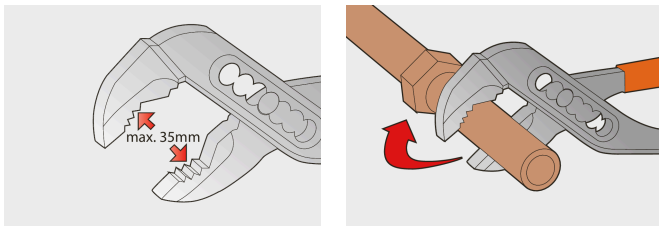
6.5

35

367

\* Images of products are symbolic. All dimensions are in mm, and weight in grams. All listed dimensions may vary in tolerance.

## Usage (pictures)



## Frequently asked questions

### **Are certified insulated tools made through a different procedure than non-certified insulated tools?**

The tools are made according to the same procedure.

### **Are insulated (VDE) tools considered as personal protective equipment (PPE)?**

According to EU regulations, VDE tools are not considered as PPE.

### **Is it possible to work with insulated pliers under electrical voltage?**

Yes, but only by professionals who follow safety requirements and use additional personal protective equipment.

### **Are the VDE tools only being sampled in series production?**

The high voltage test (at 10kV) is performed fully on each tool. Other tests are performed in accordance with the EN60900 standard.